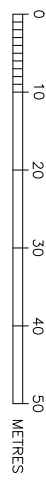


DEVELOPER CONTRACT PLAN
WORK-AS-CONSTRUCTED



NOTES:-

1. WATER SERVICE COOPERATORS:
OISEN INFRASTRUCTURE PTY LTD
PO BOX 552 KELLIVILLE NSW 2155
PH: (02) 9899 4001 FAX: (02) 9899 6005
 2. ALL LOTS VACANT AT TIME OF SURETY.
 3. ALL STRUCTURES CONSTRUCTED TO PROPOSED FINISHED SURFACE LEVELS.
 4. THE PROPOSED WORKS DETAIL HERE ON CONSTRUCTED IN ACCORDANCE WITH THE WATER SERVICES ASSOCIATION OF AUSTRALIA (WSA) MANUAL CODES AND APPLICABLE STONEY WATER SUPPLEMENTS AND TECHNICAL REQUIREMENTS - MAJOR WORKS SEWER. THE CONSTRUCTOR MUST HOLD A COPY OF THESE DOCUMENTS OF THE AT ALL TIMES.
SEWER RETICULATION CODE OF AUSTRALIA WSA 02-2002-2.2 VERSION 4 JAN 2017
STONEY WATER SUPPLEMENTS AND APPENDICES
 5. PRIOR TO APPLICATION FOR CONSTRUCTION COMMENCEMENT NOTICE (CCN AD01) THE CONSTRUCTOR MUST FORWARD TO THE WSC (DELIVERY) THE FOLLOWING DOCUMENTATION OUTLINE:
O.A. SYSTEM CERTIFICATE OF CURRENCY
CONSTRUCTION PROGRAM (INCLUDING ALL PRECAUTIONS TO MINIMISE INCONVENIENCE, RESTORATION)
PROPOSED ENVIRONMENTAL PROTECTION MEASURES DURING CONSTRUCTION
S.M.A.S. OF STONEY WATER ACCREDITED PERSONNEL THAT WILL CARRY OUT THE WORKS.
EVIDENCE OF CURRENT D.B.V.D. SERVICES INVESTIGATIONS AND REPORT.
 6. CONSTRUCTOR SUBMITTED COMMENCEMENT NOTICE TO STONEY WATER FIELD OFFICER GIVING A MIN. 48 HOURS, PRIOR TO START OF CONSTRUCTION WORKS.
 7. CONSTRUCTOR INSTALLED NON-DETECTABLE TAPE AND RAISE TO THE SURFACE AT ALL JUNCTIONS.
 8. PIPES CONCRETE ENCASED SHOWN ACCORDINGLY:
 9. BUILDING OVER/ADJACENT TO SEWER. CONDITIONS APPLY.
 10. ALL LEVELS ELECTRONICALLY GENERATED. NO LEVEL BOOK AVAILABLE.
 11. THE MINIMUM NUMBER OF FIELD CONSTRUCTION TESTS REQUIRED TO SATISFY THE SEWERAGE CODE OF AUSTRALIA ARE:
PIPE EMBEDMENT ZONE: NIL (BASED ON WSA 02-2002 PART 3 CL. 22.3.3.1)
TRENCH FILL ZONE: - TRAFFICABLE (1 PER 300mm LAYER/50m)- N/A
TRENCH FILL ZONE: - NON TRAFFICABLE (1 PER 300mm LAYER/100m)- 12
ADVANCEMENT M.H./M.S. - 2 PER M.H./M.S.: 14
 12. NUMBER OF TESTS VERIFIED BY AN ACCREDITED FIELD TESTER. NUMBERS PROVIDED ABOVE TO BE USED AS A GUIDE ONLY. THE FIELD TESTER MUST ENSURE THE CORRECT NUMBER OF TESTS IS CARRIED OUT TO SATISFY THE SEWERAGE CODE OF AUSTRALIA AS PER STONEY WATER'S INSTRUCTION TO FIELD TESTERS.
 13. ALL T.M.S. AND M.S. COVERS CLASS 'D' OR CLASS 'B' WHERE SHOWN.
 14. NEW CUSTOMER OPEN CONNECTIONS CONSTRUCTED CONCURRENTLY WITH THE NEW SEWER CONSTRUCTED BY A LICENSED PLUMBER. THE WORKS MUST BE INSTALLED IN ACCORDANCE WITH THE CURRENT NSW CODE OF PRACTICE FOR PLUMBING AND DRAINAGE AND AS/AS/NZS3800. THE CUSTOMER OPEN CONNECTION MUST BE INSPECTED BY A FAIR TRADING PLUMBING INSPECTION ASSURANCE SERVICE (PIAS) OFFICER PRIOR TO BACKFILL.
 15. A REGISTERED SUPERVISOR IS TO VERIFY EXISTING INVERT LEVELS, LOCATION AND LEVEL OF EXISTING SERVICES PRIOR TO COMMENCEMENT CONSTRUCTION. THE CONSTRUCTOR MUST OBTAIN AN UPDATED SERVICES SEARCH (DB910) THIS PLAN READ IN CONJUNCTION WITH DECKED TO COMPLY DRAWINGS AS LISTED BELOW:
DTC 2120 - DN100 PVC-U - PROPERTY CONNECTION SEWER FOR SINGLE PROPERTY - ISSUE A
DATED 18/3/15
 16. ALL MAINTENANCE SHEDS SMARTSTREAM P00 PFI OR AMAROO GMS WS ONLY.
 17. POP JUNCTIONS DN150 x 100.
 18. THIS PLAN USES GDA94200 COORDINATES.
- ENVIRONMENT NOTES:-
- E1. AREAS DOWNSLOPE OF CONSTRUCTION ACTIVITY ADEQUATELY PROTECTED FROM SEDIMENT POLLUTION ETC. SILT TRAP DEVICES ARE TO BE INSTALLED PRIOR TO ANY CONSTRUCTION ACTIVITY, EFFECTIVELY MAINTAINED AND REMOVED ONLY AFTER THE AREA HAS BEEN SAISFACTORILY REGENERATED.
 - E2. ALL STORMWATER GRANTS DOWNSLOPE OF CONSTRUCTION ACTIVITY ADEQUATELY PROTECTED BY STRAWBALES WRAPPED IN GEOTEXTILE FABRIC.
 - E3. ALL OPEN CHANNELS AND OPEN DRAINAGE LINES DOWNSLOPE OF CONSTRUCTION ACTIVITY ADEQUATELY PROTECTED BY STRAWBALE OR GEOTEXTILE FENCE.
 - E4. THE EXTENT OF CLEARING OF VEGETATION KEPT TO AN ABSOLUTE MINIMUM NECESSARY TO EFFECT THE WORKS.

NO.	AMENDMENT DESCRIPTION	BY	DATE
1	PRELIMINARY ISSUE	LN	10/11/22
2	ISSUE FOR APPROVAL	LN	30/6/22
3	SHEET NUMBER AMENDED	JL	7/10/22
4	LINE 6 GENERAL REVISION	JL	17/10/22
5	WORK-AS-CONSTRUCTED	LN	17/3/23

UTILITIES	TYPE	DATE	REF.
STONEY WATER CORPORATION			
STONEY WATER STANDARDS WITH CURRENT STONEY WATER STANDARDS			
PRIOR TO COMMENCEMENT OF EXCAVATION FOR PROPOSED AND EXISTING SERVICES CONTACT:-			
DIAL BEFORE YOU DIG	Ph. 1100		
ELECTRICITY	Ph.		
GAS	Ph.		
TELECOMMUNICATIONS	Ph.		
PLANNING AT LEAST 24 HOURS NOTICE.			

WORK-AS-CONSTRUCTED CERTIFICATION	DEVELOPER	DATE	REF.
LEOPRO 77 PTY LTD			
DESIGNER	OISEN INFRASTRUCTURE PTY LTD	16.11.22	W.A.C. PREPARED 17.03.23
DESIGNER	OISEN INFRASTRUCTURE PTY LTD	16.11.22	W.A.C. PREPARED 17.03.23
I CERTIFY THAT THE WORKS HAVE BEEN CONSTRUCTED IN ACCORDANCE WITH THE WORK-AS-CONSTRUCTED DRAWINGS.			

PPE SCHEDULE	CLASS	LENGTH	PRE-APPROVED METHOD / NOTES
UP.P.V.C.	SN8	456.41	S.C.J.

DESIGN HEAD: . . . m

NO BOUNDARY TRAPS REQUIRED.

SCALE	HOR.	VERT.
1:500	1:500	1:125

PLAN: 1:500 SECTION: . . .

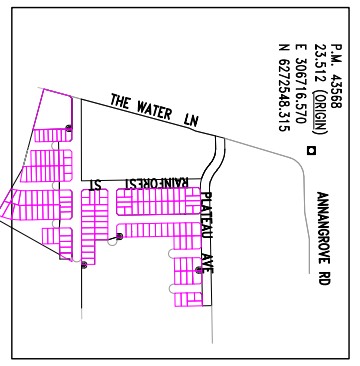
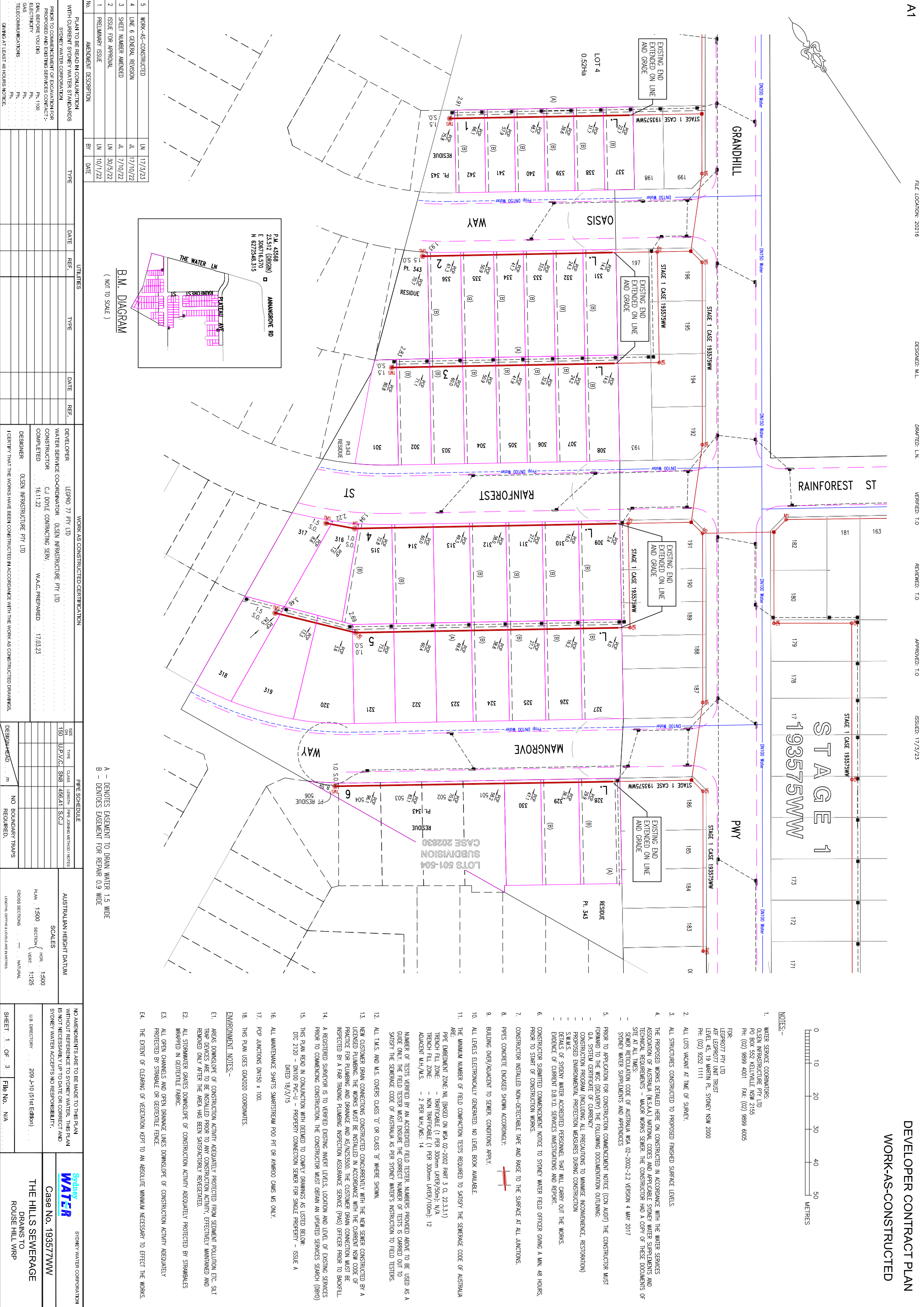
CROSS SECTIONS: . . .

LENGTHS GIVING LEVELS ARE IN METRES.

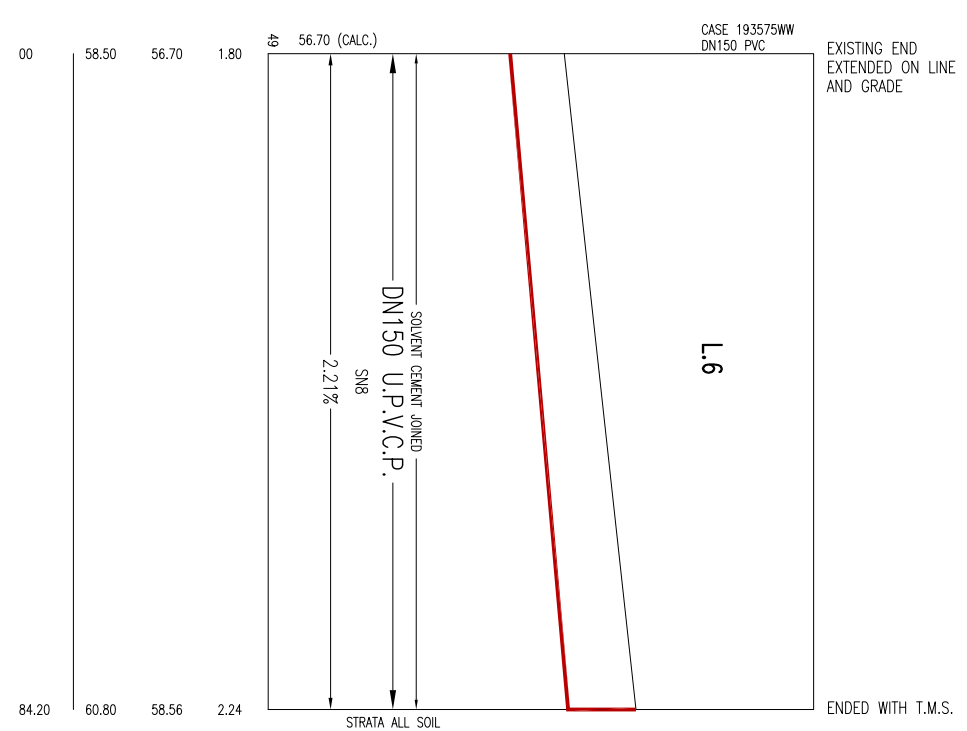
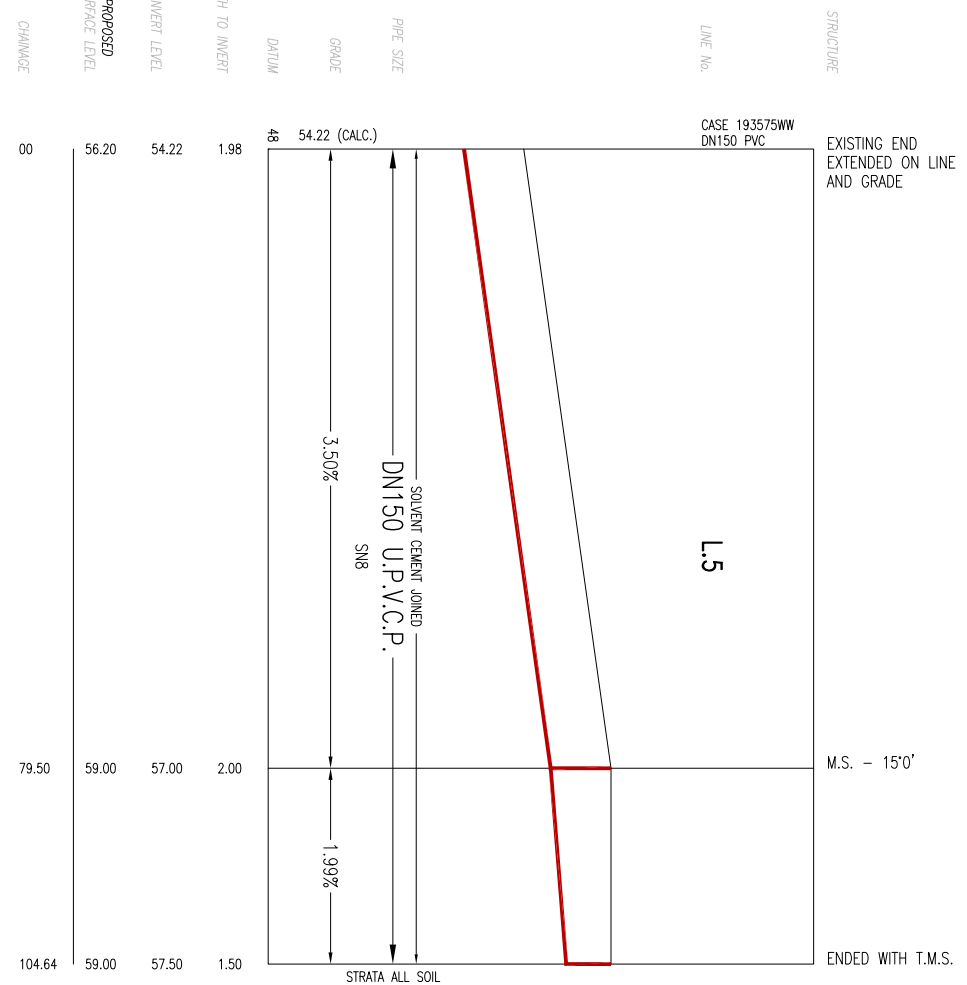
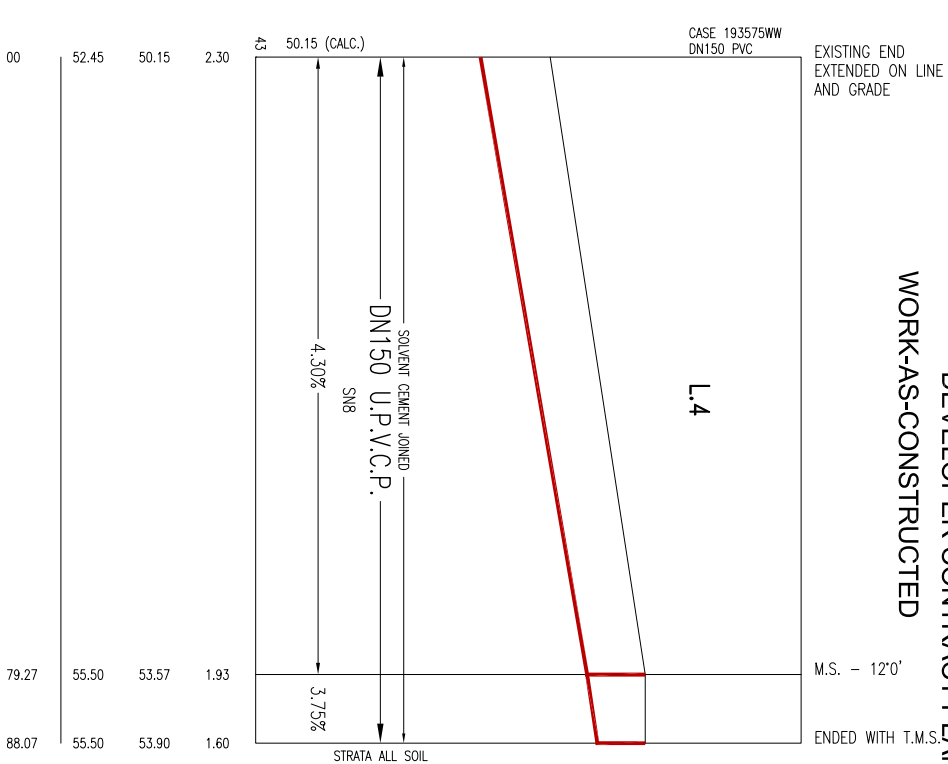
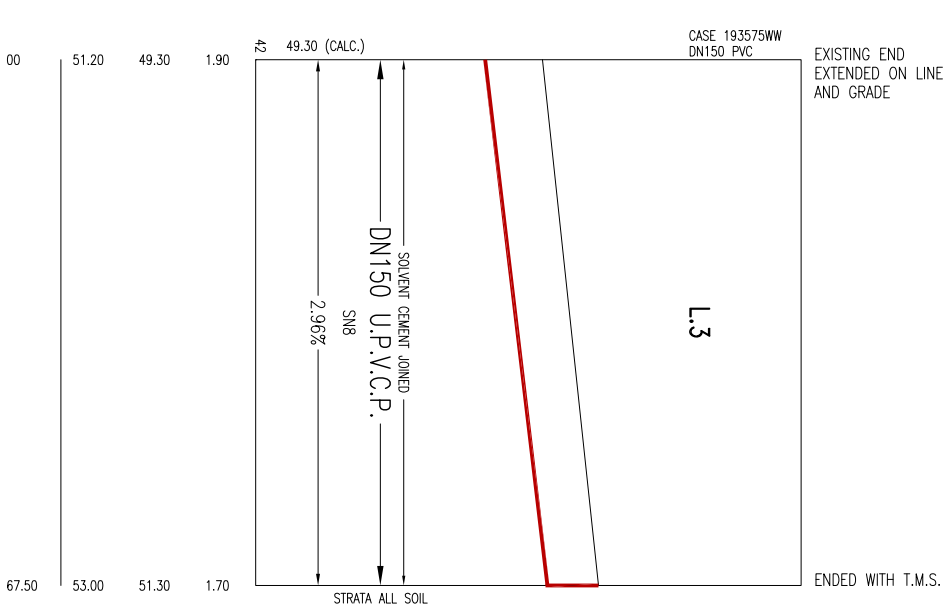
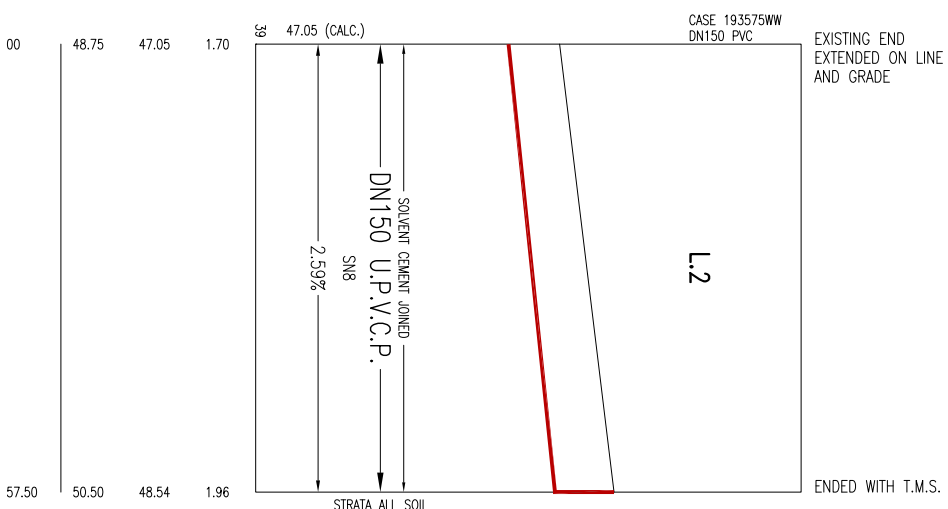
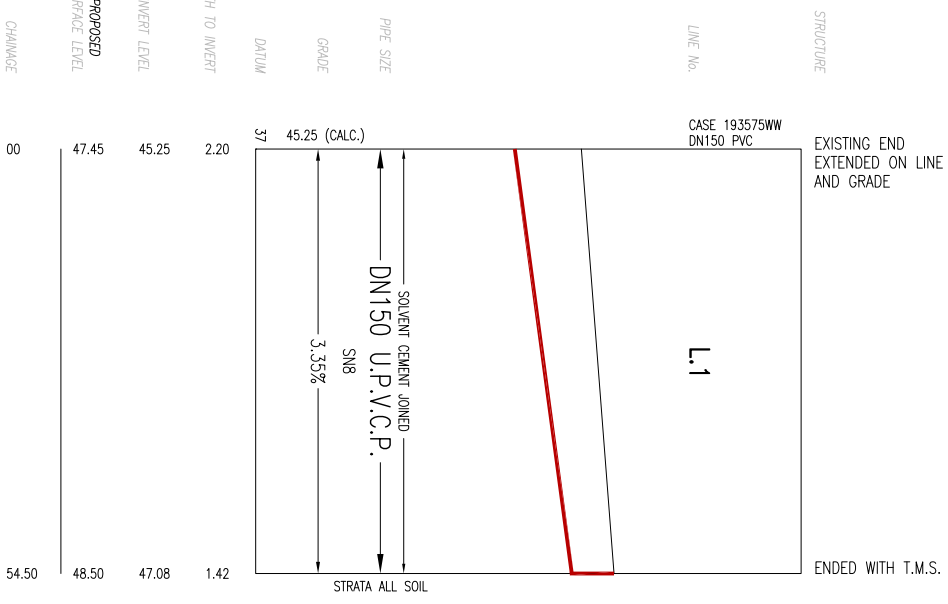
U.A. DIRECTORY: . . . 209 4110 (61st Edition)

SHEET 1 OF 3 File No. N/A

SYDNEY WATER CORPORATION
Case No. 193577WW
THE HILLS SEWERAGE DRAINS TO ROUSE HILL WRP



DEVELOPER CONTRACT PLAN
WORK-AS-CONSTRUCTED



No.	AMENDMENT DESCRIPTION	BY	DATE
1	PRELIMINARY ISSUE	LN	10/1/22
2	ISSUE FOR APPROVAL	LN	30/5/22
3	SHEET NUMBER AMENDED	JL	7/10/22
4	LINE 6 GENERAL REVISION	JL	17/10/22
5	WORK-AS-CONSTRUCTED	LN	17/3/23

WORK AS CONSTRUCTED CERTIFICATION

DESIGNER: OLSSEN INFRASTRUCTURE PTY LTD
 I CERTIFY THAT THE WORKS HAVE BEEN CONSTRUCTED IN ACCORDANCE WITH THE WORK AS CONSTRUCTED DRAWINGS

DESIGNER: OLSSEN INFRASTRUCTURE PTY LTD
 W.A.C. PREPARED: 17/03/23

COMPLETED: 16/11/22
 CONSTRUCTOR: C.J. DOWLE CONTRACTING SERV.
 W.A.C. PREPARED: 17/03/23

DEVELOPER: OLSSEN INFRASTRUCTURE PTY LTD
 DESIGNER: OLSSEN INFRASTRUCTURE PTY LTD
 W.A.C. PREPARED: 17/03/23

SYDNEY WATER CORPORATION
 Case No. 193577WW
 SHEET 2 OF 3 SHTS.

FOR DETAILS OF SERVICES SEE SHEET 1

MAINTENANCE STRUCTURE SCHEDULE

LINE No.	CHAINAGE	MH MS TMS	DN RISER	COVER CLASS	MATERIAL	COMMENTS
1	0	END	-	-	-	-
	54.50	TMS	DN225	B	U.P.V.C	TO COMPLY WITH WSA 137.
2	0	END	-	-	-	-
	57.50	TMS	DN225	B	U.P.V.C	TO COMPLY WITH WSA 137.


LINE No.	CHAINAGE	MH MS TMS	DN RISER	COVER CLASS	MATERIAL	COMMENTS
3	0	END	-	-	-	-
	67.50	TMS	DN225	B	U.P.V.C	TO COMPLY WITH WSA 137.

LINE No.	CHAINAGE	MH MS TMS	DN RISER	COVER CLASS	MATERIAL	COMMENTS
4	0	END	-	-	-	-
	79.27	MS	DN225	B	U.P.V.C	TO COMPLY WITH WSA 137. MS 12' DEFLECTION.
	88.07	TMS	DN225	B	U.P.V.C	TO COMPLY WITH WSA 137.

LINE No.	CHAINAGE	MH MS TMS	DN RISER	COVER CLASS	MATERIAL	COMMENTS
5	0	END	-	-	-	-
	79.50	MS	DN225	B	U.P.V.C	TO COMPLY WITH WSA 137. MS 15' DEFLECTION.
	104.64	TMS	DN225	B	U.P.V.C	TO COMPLY WITH WSA 137.

LINE No.	CHAINAGE	MH MS TMS	DN RISER	COVER CLASS	MATERIAL	COMMENTS
6	0	END	-	-	-	-
	84.20	TMS	DN225	D	U.P.V.C	TO COMPLY WITH WSA 137.

No.	AMENDMENT DESCRIPTION	BY	DATE
5	WORK-AS-CONSTRUCTED	LN	17/3/23
4	LINE 6 GENERAL REVISION	JL	17/10/22
3	GENERAL REVISION	JL	28/6/22
2	ISSUE FOR APPROVAL	LN	30/5/22
1	PRELIMINARY ISSUE	ML	10/1/22

WORK AS CONSTRUCTED CERTIFICATION DESIGNER: OLSEN INFRASTRUCTURE PTY LTD W.A.C. PREPARED: 17/03/23		 SYDNEY WATER CORPORATION Case No. 193577WW SH 3 OF 3 SHTS.
DESIGNER: OLSEN INFRASTRUCTURE PTY LTD I CERTIFY THAT THE WORKS HAVE BEEN CONSTRUCTED IN ACCORDANCE WITH THE WORK AS CONSTRUCTED DRAWINGS		

FOR DETAILS OF SERVICES SEE SHEET 1